

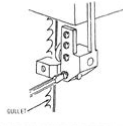
Craftsman 11 inch band saw manual

assembly

NOTE: The upper and lower blade guides support the blade and keep it from twisting during operation. An adjustment is necessary when blades are changed, replaced or installed for the first time.

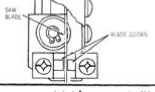
ADJUSTING UPPER BLADE GUIDE ASSEMBLY

1. Loosen lower screw on side of upper blade guide assembly and slide assembly forward until the front edge of the blade guides are approximately 1/32" from the GUILLET of the saw blade. Tighten screw.



ADJUSTING UPPER BLADE GUIDES

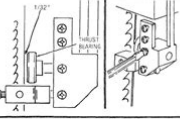
1. Loosen the two screws that lock the upper blade guides and press the two guides evenly against the sides of the blade but do not pinch the blade. Release the guides and rotate the upper wheel slightly clockwise moving the blade downward. Make sure one guide is not further away from the blade than the other. Tighten both screws.



ADJUSTING UPPER THRUST BEARING

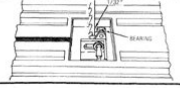
NOTE: The thrust bearing supports the blade from the rear and will rotate when the blade is pushed against it while you are cutting. As soon as you stop cutting, the bearing should stop rotating.

1. To adjust, loosen the upper screw on the side of the upper blade guide assembly and slide the bearing forward until it is approximately 1/32" from the back of the blade. Tighten screw. Rotate upper wheel slightly clockwise to check clearance. Readjust if necessary.



ADJUSTING LOWER BLADE GUIDE ASSEMBLY

1. Loosen the screw (as shown) on the side of the lower blade guide assembly and slide assembly forward until bearing is approximately 1/32" from the back of the blade. Blade guides will align with this adjustment. Tighten screw.



ADJUSTING LOWER BLADE GUIDES

1. Loosen the two screws that lock the lower blade guides and press the two guides evenly against the sides of the blade but do not pinch the blade. Release the guides and rotate the upper wheel slightly clockwise moving the blade downward. Make sure one guide is not further away from the blade than the other. Tighten both screws.



NOTE: After all adjustments have been made, turn the upper wheel by hand (clockwise) a few turns to check blade travel and clearance.

12

File Name: Craftsman 11 inch band saw manual.pdf

Size: 2640 KB

Type: PDF, ePub, eBook

Category: Book

Uploaded: 18 May 2019, 22:12 PM

Rating: 4.6/5 from 798 votes.

Download Now!

Please check the box below to proceed.



I'm not a robot



reCAPTCHA
Privacy - Terms

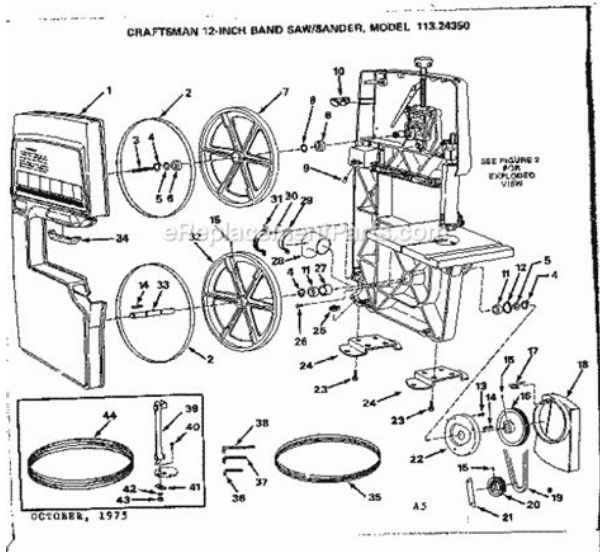
Book Descriptions:

Craftsman 11 inch band saw manual



Page Count 24 This warranty applies only while this product is used in the United States. This warranty gives you specific legal rights, and you may also have other rights which vary from state to state. Read this manual to understand this saw. Learn the use and function of the ON/OFF switch, table lock knob. Review the maintenance methods for this saw. See page 187 Read the following WARNING labels found on the front of the saw WARNING DANGER i, i WHEN INSTALLING OR MOVING THE SAW. This saw has an approved 3-conductor cord and a 3-prong grounding type plug. Use only 3-wire, grounded outlets rated 120 volts, 15 amperes amps. The green conductor in the cord is the grounding wire. To avoid electrocution, NEVER connect the green wire to a live terminal. NEVER STAND ON TOOL, Serious injury could occur if the tool tips or you accidentally hit the cutting tool. Do not store anything above or near the tool where anyone might stand on the tool to reach them. BEFORE EACH USE Inspect your saw. DISCONNECT THE SAW. To avoid injury from accidental starting, unplug the saw, turn the switch off and remove the switch key before changing the setup, opening covers, removing guards, or blade. REPLACE damaged, missing, or failed parts before using the saw again. Follow instructions for lubricating. REMOVE ADJUSTING KEYS AND WRENCHES from tool before turning it on. Follow the instructions that come with the accessories. Cluttered areas and benches invite accidents. Floor must not be slippery. To avoid burns or other fire damage, never use the saw near flammable liquids, vapors or gases. Plan ahead to protect your eyes, hands, face, ears. KNOW YOUR SAW. Read and understand the owner's manual and labels affixed to the tool. Learn its application and limitations as well. To avoid injury from accidental contact with moving parts, don't do layout, assembly, or setup work on the saw while any parts are moving. This can cause permanent eye damage. Wear safety goggles not glasses that comply with ANSI Z87. <http://www.kattliv.com/kattliv/admin/userfiles/fluke-1912a-manual.xml>

- **craftsman 11 inch band saw manual, craftsman 11 inch band saw manual, craftsman 11 inch band saw manual, craftsman 10 inch band saw manual download, craftsman 11 inch band saw manual download, craftsman 11 inch band saw manual instructions, craftsman 11 inch band saw manual 2017, craftsman 11 inch band saw manual free, craftsman 11 inch band saw manual 2016, craftsman 11 inch band saw manual review, craftsman 11 inch band saw manual for sale, craftsman 11 inch band saw manual 2, craftsman 11 inch band saw manual, craftsman 12 inch band saw manual, craftsman 10 inch band saw manual, craftsman 10 inch band saw manual download, craftsman 14 inch band saw manual, craftsman 11 inch band saw owners manual.**



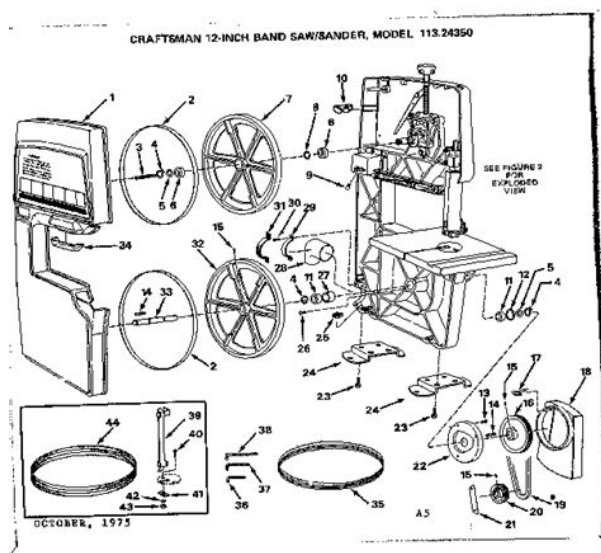
1 shown on package. Everyday eyeglasses have only impact resistant lenses. They are not safety glasses. Safety goggles are available at Sears retail catalog stores. To avoid possible hearing damage, wear ear plugs or muffs when using your saw for hours at a time. Make sure there are no nails or foreign objects in the part of the workpiece to be cut. To avoid this, always use a W block or clamp the work to the miter gage. Cut only one workpiece at a time. Clear everything except the workpiece and related support devices off the table before turning the saw on. When backing up the workpiece, the blade may bind in the kerf cut. FPM Feet per minute. Used in reference to surface speed of blade. Freehand as used for band saw Performing a cut without the workpiece properly supported on the work table. Workpiece The item on which the cutting operation is being performed. The surfaces of a workpiece are commonly referred to as faces, ends, and edges. Worktable The surface on which the workpiece rests while performing a cutting operation. CONNECTING TO POWER SUPPLY OUTLET This machine must be grounded while in use to protect the operator from electric shock. Plug power cord into a 120V properly grounded type outlet protected by a 15amp. If the outlet you are planning to use for this power tool is of the two prong type, DO NOT REMOVE OR ALTER THE GROUNDING PRONG IN ANY MANNER Use an adapter as shown below and always connect the grounding lug to a known ground. Your unit is for use on 120 volts, and has a plug that looks like the one shown below. The ground conductor has a green jacket and is attached to the tool housing at one end and to the ground prong in the attachment plug at the other end. An adapter as illustrated is available for connecting plugs to 2prong receptacles. NOTE The adapter illustrated is for use only if you already have a properly grounded 2prong receptacle. The use of any extension cord will cause some loss of power. <http://www.eksternest.be/images/fluke-1953a-manual.xml>



Make certain all items are accounted for. NOTE All bolts should be inserted from the top. Base Workbench 7 Upper Guide Assembly 2. Open the front cover of the saw by pulling forward on the finger hold located on the left side of the band saw. Repeat this step for the lower blade guides. NOTE There is a patch on the blade guide threads that makes them difficult to turn, This is necessary to prevent rotation of the guides during operation of the saw. Guide 5. Loosen the setscrew which locks the upper blade guide support located on the left side of the support behind the bearing. Push the support all the way back. Loosen the setscrew holding the upper backup bearing Located on the right side of the upper slide, Push the bearing all the way back. With the guide support and backup bearing pushed back, slightly tighten both set screws. Loosen the setscrew holding the lower backup bearing, Push the bearing all the way back. Lift the tension catch away from the teeth and move it to its lowest position. Note which notch the top of the tension catch is closest to, Tension Adjust! Knob 2. Continue to pull up on the tension assembly until it has moved two or three notches above where the blade first straightened out. Engage the teeth on the catch into the notches. The blade should be completely on the tire. If not, adjust the tracking until the blade is on all three tires. Tracking Adjustment Set Screw 5. Rotate the upper wheel by hand in a clockwise direction for a few more turns. Make sure the blade stays in the same location on the tires. Readjust if necessary, until blade is tracking properly. WARNING Turn off saw, remove switch key. The adjustment of the guides and bearings should be checked whenever a different blade is installed, 1. Adjust the backup bearing first. Repeat on the other backup bearing. NOTE The backup bearing is to support the back edge of the blade while cutting. The blade should not contact the bearings when you stop cutting. 3.

Adjust the position of the blade guide support next. The set of the teeth and the sharp edge of the teeth would be damaged. Do this for all four guides, NOTE There is a patch on the blade guide threads that makes them difficult to turn. This is necessary to prevent rotation of the guides during operation of the Saw. 6. Reinstall blade guard and tighten screw. 7. Close the front cover of the saw. This will keep the table flat and in alignment. J WARNING Turn off saw, remove switch key and

unplug before making any adjustments. ALIGNING THE TABLE SQUARE TO THE BLADE 1. Loosen the upper slide lock knob and position the guide assembly all the way up. Push the clip until it is fully seated on the Frame. Hose Clip 13 Bevel indicator 3 Table Lock Knob 4. Tilt bevel scale. Shows degree table is tilted for bevel cutting. 5. Tension Lock Knob,,, controls the amount of blade tension when changing blades. 6. Tracking Adjustment Set Screw... adjust to keep blade running in center of wheels. 7. Sawdust Ejection Port. THIS FEATURE IS INTENDED TO HELP PREVENT UNAUTHORIZED AND POSSIBLY HAZARDOUS USE BY CHILDREN AND OTHERS. a. To turn machine on, insert key into switch. NOTE Key is made of yellow plastic; locate in loose parts bag. b. Insert finger under switch lever and pull end of switch out. c. To turn machine OFF. This will prevent the machine from starting up again when the power comes back on. 15 REPLACE damaged missing, or failed parts before using the saw again. Floor must not be slippery. To avoid burns or other fire damage, never use the saw near flammable liquids, vapors or gases. To avoid injury from accidental contact with moving parts, don't do layout, assembly, or setup work on the saw while any parts are moving. Plan your work. USE THE RIGHT TOOL. Dress for safety. Any power saw can throw foreign objects into the eyes. This can cause permanent eye damage. They are not safety glasses. Safety goggles are available at Sears retail catalog stores.



<https://ayurvedia.ch/boss-gt6-manual-download>

They can get caught and draw you into moving parts, Wear nonslip footwear. Tie back long hair. Roll long sleeves above the elbow. 16 To avoid possible hear. NEVER use another person as a substitute for a table extension, or as additional. Plan the way you will hold the workpiece from start to finish. Do not hand hold pieces so small that your fingers will go under the blade guard. Use jigs or fixtures to hold the work and keep your hands away from the blade. Avoid awkward operations and hand positions where a sudden slip could cause fingers or hand to move into the blade, DONT OVERREACH. Do not restart until finding and correct the problem. BEFORE LEAVING THE SAW Wait for it. It is not capable of doing inside cutting, This band saw is designed to cut wood and wood like products only. Workpiece Pattern Line Blade WRONG Not planning ahead for cutting a curve could bind or twist blade if workpiece is forced. NOTE Blade guard is raised and right hand removed for clarity of picture only. WARNING To avoid blade contact, adjust the upper guide assembly to just clear the workpiece. 1. Use both hands while feeding the work into the blade. Hold the workpiece firmly against the table. Use gentle pressure. Do not force the work. Relief cuts are made when an

intricate curve too small a radius for the blade is to be cut but. Workpiece Blade Relief Cuts Pattern Line NOTE Blade guard is raised and right hand removed for clarity of picture only. 18 Do not use a sharp knife or any kind of solvent, GENERAL Keep your Band Saw clean. Remove sawdust from the inside frequently, Do not allow pitch to accumulate on the table, blade guides, or thrust bearings. Clean them with Craftsman Gum and Pitch Remover, Apply a thin coat of automobile type wax to the table top so the wood slides easily while cutting, Also apply wax to the inside surfaces of the trunnion. MOTOR!ELECTRICAL Frequently vacuum or blow out any sawdust from the motor. Reassemble exactly as originally assembled.

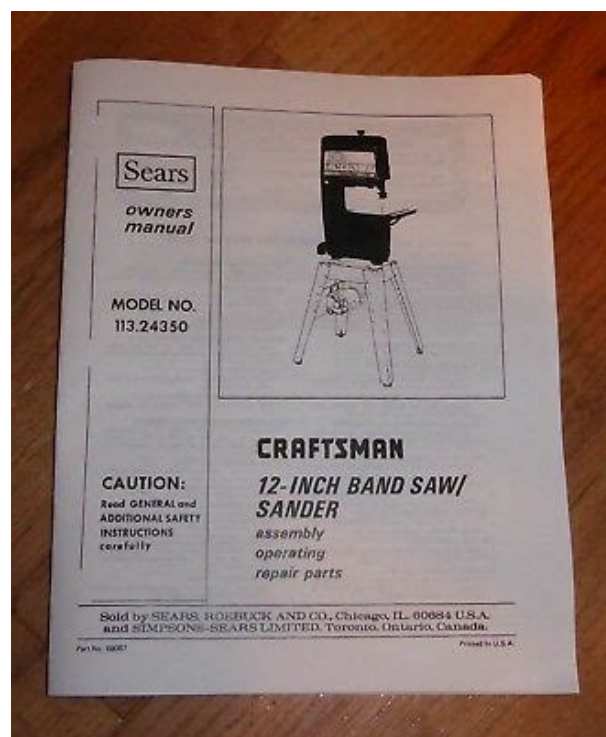
<https://www.davidpipe.com/images/97-s10-manual-transmission-fluid.pdf>



They require no further lubrication. See your nearest Sears Store or Catalog Department for other accessories. Do not use any accessory unless you have received and read complete instructions for its use. Blade does not run in the approximate center of the upper wheel. Band Saw slows down when cutting, Blades breaking. Saw is noisy when running. Blade guides will not stay in position PROBABLE CAUSE. Defective On/Off switch. Blade guides and backup bearings are in contact with the blade. Blade guides and bearings not properly adjusted. 2. Worn or defective blade. 1. Patch on

blade guide threads has deteriorated allowing them to rotate with the blade REMEDY 1 Replace defective parts before using Band Saw again. Consult Sears Service. See Basic Band Saw Operation Section. 1. Adjust blade tension. STD502502 820272 STD532525 820088 817944 STD511103 820493 816464 813989 1 STD375006 820273 922256 816113 STD600803 820274 61400 817149 820276 69164 STD512505 820261 821157 SP5492 Description Screw Soc. WHEN ORDERING REPAIR PARTS, ALWAYS GIVE THE FOLLOWING INFORMATION PARTNUMBER PART DESCRIPTION MODEL NUMBER 113,244500 NAME OF ITEM 10Inch Band Saw All parts listed may be ordered from any Sears Service Center and most Sears stores, if the parts you need are not stocked locally, your order will be electronically transmitted to a Sears Repair Parts Distribution Center for handling. Sold by SEARS, ROEBUCK AND CO., Chicago, IL 60684 U.S.A. Part No, SP5492 Form No. Page Count 52 This warranty applies only while this product is used in the United States. This warranty gives you specific legal rights and you may also have other rights which vary from state to state. Learn its application and limitations as well as the specific potential hazards peculiar to this tool. 2. GROUND ALL TOOLS This tool is equipped with an approved 3 conductor cord and a 3 prong grounding type plug to fit the proper grounding type receptacle. The green conductor in the cord is the grounding wire.

<https://www.jbnature.com/images/97-s10-service-manual-download.pdf>



Never connect the green wire to a live terminal. 3. KEEP GUARDS IN PLACE, in working order, and in proper adjustment and alignment. 4. REMOVE ADJUSTING KEYS AND WRENCHES Form habit of checking to see that keys and adjusting wrenches are removed from tool before turning it on. 5. KEEP WORK AREA CLEAN Cluttered areas and benches invite accidents. Floor must not be slippery due to wax or sawdust. 6. AVOID DANGEROUS ENVIRONMENT Dont use power tools in damp or wet locations or expose them to rain. Keep work area well lighted. Provide adequate surrounding work space. 7. KEEP CHILDREN AWAY All visitors should be kept a safe distance from work area. 8. MAKE WORKSHOP CHILDPROOF with padlocks, master switches, or by removing starter keys. 9. DONT FORCE TOOL It will do the job better and safer at the rate for which it was designed. 10. USE RIGHT TOOL Dont force tool or attachment to do a job it was not designed for. 11. WEAR PROPER APPAREL Do not wear loose clothing, gloves, neckties or jewelry rings, wrist watches to get caught

in moving parts. Nonslip footwear is recommended. Wear protective hair covering to contain long hair. Roll long sleeves above the elbow. 12. USE SAFETY GOGGLES Head Protection Wear Safety goggles must comply with ANSI Z87.1 at all times. Everyday eyeglasses only have impact resistant lenses, they are NOT safety glasses. Also, use face or dust mask if cutting operation is dusty, and ear protectors plugs or muffs during extended periods of operation. 13. SECURE WORK Use clamps or a vise to hold work when practical. Its safer than using your hand, and frees both hands to operate tool. 14. DONT OVERREACH Keep proper footing and balance at all times. 15. MAINTAIN TOOLS WITH CARE Keep tools sharp and clean for best and safest performances. Follow the instructions that accom pany the accessories. The use of improper acces soriesmay cause hazards. 19.

NEVER STAND ON TOOL Serious injury could occur if the tool is tipped or if the cutting tool is accidentally contacted. Do not store materials above or near the tool such that it is necessary to stand on the tool to reach them. 20. CHECK DAMAGED PARTS Before further use of the tool, a guard or other part that is damaged should be carefully checked to ensure that it will operate properly and perform its intended function. Check for alignment of moving parts, binding of moving parts, breakage of parts, mounting, and any other conditions that may effect its operation. A guard or other part that is damaged should be properly repaired or replaced. 21. NEVER LEAVE TOOL RUNNING UNATTENDED Turn power off. Dont leave tool until it comes to a complete stop. BEFORE EACH USE 1. Inspect your saw. If any part of this band saw is missing, or bent, or failed in any way, or any electrical componentsdo not work properly, turn the saw off, remove switch key, and unplug the saw. Replace damaged, missing, or failed parts before using the saw again. 2. Plan your work to protect your eyes, hands, face, ears and body. a. Do not do layout, assembly, or set up work on the table while the saw is running. b. Wear safety goggles not glasses that comply with ANSI Z87.1 shown on package. Using any power tool can result in foreign objects being thrown into the eyes, which can result in permanent eye damage. Safety goggles are available at Sears retail or catalog stores. Use of glasses or use of goggles not in compliance WEAR YOUR with ANSI Z87.1 could result in severe injury from breakage of the eye protection. c. For dusty operations, wear a face shield along with safety goggles. d. Use extra caution with large, very small, or awkward workpieces. 1. Use extra supports tables, saw horses, etc. forany workpieces large enough to tip when not held down to the table top. 2. Do not feed small pieces that require your finger holding the workpiece to go under the guard area.

<https://www.nationaalgolfcongres.nl/wp-content/plugins/formcraft/file-upload/server/content/files/16286858ed9a63---C920-lexmark-manual.pdf>

Use jigs or fixtures to hold the work and keep your hands away from the blade.. When cutting irregularly shaped work pieces, plan your work so it will not pinch the blade. A piece of molding, for example, must lay flat or be held by a fixtu re or jig that will not let it twist, rock or slip while being cut. 4. Properly support round material such as dowel rods, or tubing.To avoid slips and jams causing injury 1. Choose the right size and style blade for the material and the type of cutting you plan to do. Use this band saw to cut and sand only wood, wood like products and plastic. 2. Make sure the blade teeth point downward toward the table. 3. Make sure the blade tracking guides and thrust bearings are properly adjusted. 4. Always check and correctly adjust blade or sanding belt tension. To avoid accidental blade contact, minimize blade breakage and provide maximum blade support. 1. Always adjust the upper blade guide and blade guard to just clear the workpiece. 2. Plan your hand placement so your fingers will not be where a sudden slip could cause them to hit the blade. Make sure all clamps and locks are tight and there is no excessive play in any parts. To avoid an electrical shock, make sure your fingers do not touch the metal prongs on the plug when installing or removing the plug to or from a live outlet. It could ignite the sawdust inside the saw.Turn the saw off. Remove switch key and unplug the saw. Do not restart until finding and correcting the problem. b. Avoid awkward hand positions where a sudden slip could cause a hand to

move into the blade or the sanding belt. Remove switch key. Remove plug from power source outlet. Wait for all moving parts to stop. e. When backing up the workpiece, the blade may bind in the kerf cut. This is usually caused by sawdust clogging up the kerf or because the blade comes out of the guides. If this happens 1, Turn saw off. 2. Unplug saw. 3. Remove switch key. 4, Wait for all moving parts to stop. 5. Remove band saw cover.

www.dsnjl.com/userfiles/files/car-service-manuals-pdf

6. Stick a flat blade screwdriver or wedge into the kerf. 7. Turn the upper wheel by hand while backing up the workpiece. Before removing loose pieces from the table, turn saw off and wait for all moving parts to stop. Consult the owners manual for recommended accessories. The use of improper accessories may cause risk of injury to persons. Compound Cutting A simultaneous bevel and miter cutting operation. Freehand as used for band saw Performing a cut without the workpiece properly supported on the work table. Gum A sticky, sap based residue from wood products. Kerf The material removed by the blade in a through cut or the slot produced by the blade in a nonthrough or partial cut. Leading End The end of the workpiece which is pushed into the cutting tool first. Mitering An angle cutting operation made across the width of the workpiece. Push Stick A device used to feed the workpiece through the saw during narrow ripping type operations so the operators hands are kept well away from the blade. Resaw A cutting operation to reduce the thickness of the workpiece to make thinner pieces. Resin A sticky, sap based substance that has dried. Ripping A cutting operation along the length of the work piece. Sawblade Path The area of the worktable or workpiece directly in line with the saw blade. Set The distance the tip of the saw blade tooth is bent outward from the face of the blade, Trailing End The workpiece end last cut by the saw blade. Workpiece The item on which the cutting operation is being performed. Worktable The surface on which the workpiece rests while performing a cutting or sanding operation. The ground conductor has a green jacket and is attached to the tool housing at one end and to the ground prong in the attachment plug at the other end. This plug requires a mating 3conductor grounded type outlet as shown above. An adapter as shown is available for connecting the plug to 2prong receptacles.

The green grounding lead extending from the adapter must be connected to a permanent ground such as a properly grounded outlet box. MOTOR SAFETY PROTECTION CAUTION To avoid motor damage this motor should be blown out or vacuumed frequently to keep sawdust from interfering with normal motor ventilation. 1. This tool should be connected to a 120V, 15 amp branch circuit with a 15 amp fuse or circuit breaker. UNPLUG THE TOOL. Check the saw blade to make sure it turns freely. If the blade is free, try to start the motor again. Heavy loads, however, require that voltage at motor terminals equals the voltage specified on nameplate. 5. Most motor troubles may be traced to loose or incorrect connections, overload, reduced input voltage such as small size wire in the supply circuit or to overly long supply circuit wire. Always check the connections, the load and the supply circuit whenever motor fails to perform satisfactorily. Check wire size and length with the Wire Size Chart below. WIRE SIZES The use of any extension cord will cause some loss of power. To keep this to a minimum and to prevent overheating and motor burnout, use the table below to determine the minimum wire size AW.G. extension cord. Use only 3wire extension cords which have 3prong grounding type plugs and 3pole receptacles which accepts the tools plug. CAUTION For circuits that are farther away from electrical service box, the wire size must be increased proportionately in order to deliver ample voltage to the saw motor. Length of the 120 Volts Wire Sizes Required Conductor American Wire Gage Number 0 25 Ft. 16 26 50 Ft. 14 51 100 Ft. 12 Follow ONLY instructions that are meant for your model saw. 2. If you are missing any parts while putting your saw together, do not continue assembly. Contact your Sears Service Center or Retail Store and get the missing parts before continuing assembly or trying to use the saw. Complete parts lists are located at the end of this manual.

Use these lists to identify the number of any missing part. 3. Sometimes small parts get lost in

packaging materials. Do not throw away any packaging until your saw is put together. If you are missing a part, check the packaging before contacting Sears. TO remove the front cover, pull the cover at the neck and underside of throat area. Line up the three tabs on brackets with slots on leg and tap into place. Make sure lip on bracket points up. **WARNING** After the legset has been attached to the basic saw assembly, it will be necessary to adjust the leveling feet so the saw does not rock. The back cabinet of the saw should be laying flat on the floor. It may be necessary to have someone help you lift the saw. Make sure that the four 4 holes in each corner of the saw line up with the four 4 holes in the top of each leg. At this time only put bolts through the sides of the saw assembly not the front. Only finger tighten nuts. 4. Position the leg channel inside the legset as shown. Fasten the channel piece, leg, and saw together with two 2 truss head bolts on each side. The threaded section of the bolts should point towards the inside of the basic saw assembly. Put a lock washer and hex nut on each bolt. Finger tighten nuts at this time. **SAW BASE LEG ! LOCK WASHER TRUSS HEAD SCREW** Truss head screw, lock washer, hex nut, and front channel piece. 12 It may be necessary to slightly tilt the saw assembly backwards in order to get the four 4 holes in each corner of the saw to line up with the four 4 holes in the top of each leg. Attach the four 4 lower stiffeners to the legs. Two 2 truss head bolts, washers, and hex nuts are required to hold each end of a lower stiffener in place. Only hand tighten hex nuts. It may be necessary to have someone help you in order to avoid damaging the saw. Attach the corner brackets to the front flange in holes as illustrated. Attach both corner brackets. Place the right side panel on its back side as illustrated.

Stand up the lower shelf on the rear flange and line up the holes on the corner bracket and shelf stiffener with the holes in the side panel. Repeat procedure for left side panel. **SHELF RIGHT SIDE SHELF STIFFENER PANEL REAR FLANGE** 5. Locate the two 2 skirts, eight 8 truss head bolts, lock washers and hex nuts. Assemble one skirt to the front of the cabinet using four 4 bolts, lock washers and nuts. Hand tighten only. Stand the cabinet upright and assemble the rear skirt to the cabinet using two 2 truss head bolts lock washers and nuts using the top two holes only. From inside the cabinet insert two bolts out through the two remaining holes in the rear skirt. Install lock washers and nuts hand tightened only. Attach the leveling feet to bottom of side panels in front and rear as illustrated. Hand tighten hex nuts. The front two bolts hold the saw, lower wheel cover, and the cabinet together. Mount hinges on either side of the door with phillips screwdriver. 2. Locate the four 4 truss head bolts, lock washer and hex nuts to attach door hinges to the side panel. Attach the magnetic catch stop plate to the side panel opposite the side the hinges are to be mounted. Adjust the stop plate if necessary with phillips screw driver for desired closure. **SIDE PANEL MAGNETIC CATCH STOP PLATE MAGNETIC CATCH** 16 Install the hand wheel. Reach inside the base to the back side of the bevel mechanism and put the nut in place. Hold the nut in place with a finger. Pay attention to where the oil plug is located. No spacer goes on the fourth motor stud. **MODEL 113.248210 ONLY** 3. Install the motor pulley onto the motor shaft with the set screw boss toward the motor. Align the groove in the pulley with the shaft key and install the motor pulley on the motor shaft with the setscrew boss toward the motor. When mounting the motor, the motor stud without a spacer goes into this slot. Start the flanged nuts by hand only at this time. **MOTOR MOUNT** 9.

Install the threaded stud through the hole in the lower leg of the motor mount and over the motor stud as shown. Tighten the flanged lock nuts, using a 3/4 inch wrench, until almost tight. See page 34 for instructions on tilting head. **NOTE** Do not overtighten the flange nuts. If the pulleys are not in line, loosen the set screw holding the pulley on the motor shaft and position the pulley. A notch in the small end of the motor support is provided for access to the set screw and belt. The motor slides on the three 3 spacers and is locked in place by the flanged lock nut at the threaded stud. Belt tension is important. Over tensioning may cause vibration while too little tension may allow the belt to slip under heavy loads, **TIGHTEN FLANGE NUT AFTER TENSIONING BELT WITH WING NUT** 19 Coming from the underside of the table will be a cord with a black, white and green wire. This is the motor cord. Swing the cover open. 3. Install the green ground wire by removing the green grounding

screw and inserting it through the round metal terminal on the green ground wire of the motor cord. Reinstall the green screw into the hole from which it was removed and tighten securely. **WARNING TO AVOID ELECTROCUTION, NEVER CONNECT ANYTHING BUT THE GROUND WIRE COLORED GREEN TO THE GREEN SCREW.** 4. Insert terminal end of WHITE wire on spade terminal marked T4 on the motor. Push terminal firmly until seated. 5. Insert terminal end of BLACK wire on spade terminal marked T1 on the motor. Push terminal firmly until seated. 6. Close motor connector box being sure that power cord is seated in the largest strain relief groove and tighten box cover screws. 7. **DO NOT** plug in power cord. **GREEN BLACK WIRE TERMINAL Tt TERMINAL GREEN WIRE TO GREEN SCREW STRAIN RELIEF WtRE TO TERMINAL T4 20** When going from 3000 to 1500 FPM remove the belt from the motor pulley first. 4. Reapply tension to motor belt by tightening the wingnut.

21 Always adjust the guides before turning on the band saw and lock the guide bar by tightening the knob. 8 **GUIDE BAR LOCK KNOB ALL MODELS** 23 **Blade Tension** Displays the blade size for which the tension has been adjusted. **Blade Speed** Displays the speed of the blade in surface feet per minute FPM. **NOTE** The function being displayed is indicated by an abbreviated name of the function in the left hand area of the display; either BEV, TEN, or FPM. **BATTERY COVER** The Battery Cover covers the battery compartment, To release the cover, insert a small coin into one of the release slots and twist. Remove the cover. 1. **Installing the Battery** The battery is supplied with the loose parts. It is a 6volt, type J alkaline battery. Push the battery down and back until the top edge of the battery is caught under the ribs in the compartment. Do not force the battery. If it doesnt push in easily, remove the battery and check that it is positioned correctly. 2. Reinstall battery cover by inserting the tabs on the lower edge of the cover into the mounting holes in the control and pushing the cover into position. 24 **USING THE ELECTRONIC INDICATOR SYSTEM** 1. **Setting the Bevel Angle Reference Point.** Whenever the battery is installed or a new zero point is desired, it is necessary to set the zero reference. Normally the zero reference is set with the blade vertical to the table. Turn the tension knob until the correct readout appears for the blade or sanding belt you have selected. The two starting speeds are 3000 FPM and 1500 FPM. Do not feed the work piece too rapidly, it will overload the motor and stall the blade, 25 Repeat the same step for the lower blade guides.Repeat for lower blade guide support. **CAREFULLY UNCOIL THE BLADE HOLDING IT AT ARMS LENGTH.** 6. Uncoil the blade. 7. Place the blade over the wheels with the teeth pointing downwards toward the table as shown. Make sure the blade is between the blade guides and is in the center of the rubber tires. **NOTE** If the blade wi!

<https://skazkina.com/ru/boss-gt6-manual-download>